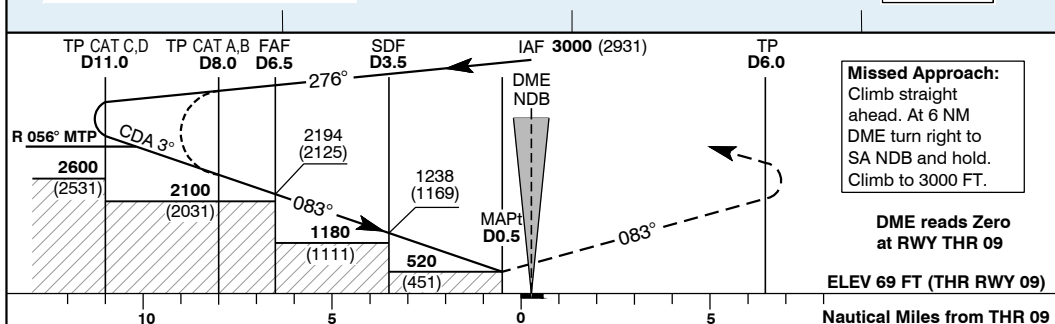
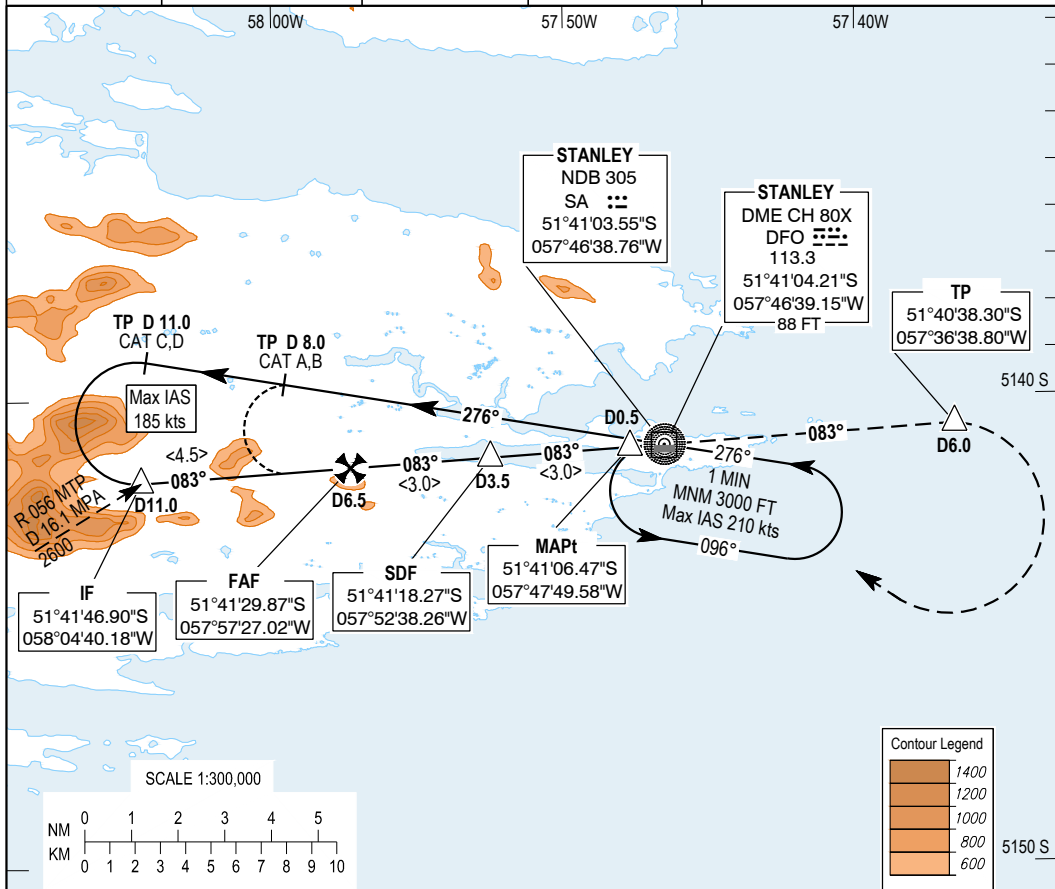


SFAL **CAT A, B, C, D**

AD ELEV	THR ELEV	TRANSITION ALT	VAR
74 FT	69 FT	5000	3° E 2019
INFORMATION			
118.100			

STANLEY **NDB/DME RWY 09**



RECOMMENDED PROFILE			RATE OF DESCENT		PROCEDURE			VISUAL CIRCLING		CIRCLING SOUTH OF RUNWAY CENTRELINE PROHIBITED IF FIREARM RANGE ACTIVE
Gradient 5.24 %, 320 FT/NM						MDA (MDH)	RVR km	OCA (OCH)	VIS km	
Position	ALT / HGT	G/S KT	FT / MIN							
6 NM	2030 (1961)	160	850		A	520 (451)	1.5	520 (446)	1.9	
5 NM	1710 (1641)	140	745		B	520 (451)	1.5	570 (496)	2.8	
4 NM	1390 (1321)	120	635		C	520 (451)	2.0	1320 (1246)	3.7	
3 NM	1075 (1006)	100	530		D	520 (451)	2.0	1320 (1246)	4.6	
2 NM	755 (686)	80	425							

A diagram of a runway with a centerline. A shaded area represents the circling zone. Two angles are marked: 266° and 086°. A line points to the shaded area with the text "No Circling".

INSTRUMENT APPROACH CHART - ICAO

CHANGE: VM OCA, PROC MDA.

BEARINGS ARE MAGNETIC

05 Sep 2019

Falkland Islands Civil Aviation Department