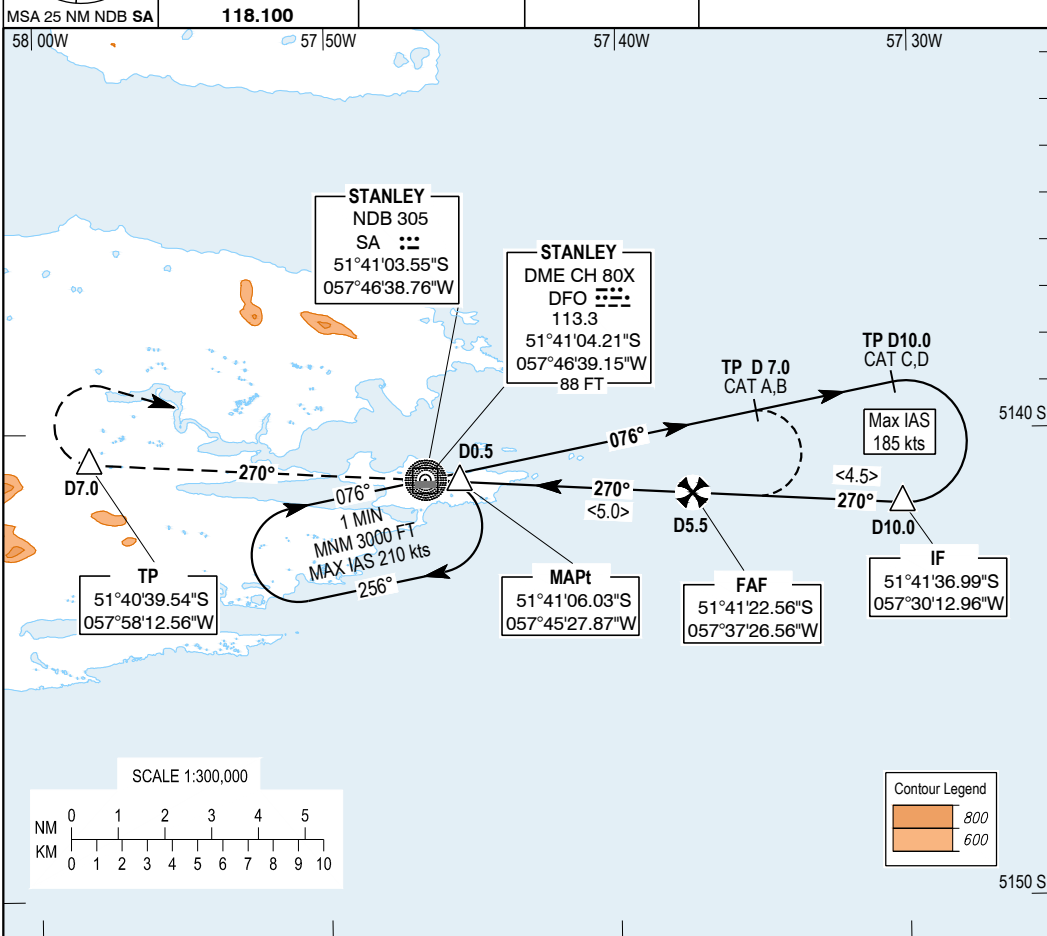


# **SFAL** **CAT A, B, C, D**

AD ELEV	THR ELEV	TRANSITION ALT	VAR
74 FT	70 FT	5000	3° E 2019

INFORMATION  
**118.100**

## **Stanley/ STANLEY** **NDB/DME RWY 27**



### **Missed Approach:**

Climb straight ahead.  
At 7 NM DME turn right  
to SA NDB and hold.  
Climb to 3000 FT.

**DME reads Zero  
at RWY THR 27**

**ELEV 70 FT (THR RWY 27)**

Nautical Miles from THR 27				5		0		5		10	
RECOMMENDED PROFILE			RATE OF DESCENT	PROCEDURE			VISUAL CIRCLING		CIRCLING SOUTH OF RUNWAY CENTRELINE PROHIBITED IF FIREARM RANGE ACTIVE		
Gradient 5.24 %, 320 FT/NM				MDA (MDH)	RVR km	OCA (OCH)	VIS km				
Position	ALT / HGT	G/S KT	FT / MIN								
5 NM	1710 (1640)	160	850	A 450 (380) B 450 (380) C 450 (380) D 450 (380)	1.5	500 (426)	1.9				
4 NM	1395 (1325)	140	745		1.5	570 (496)	2.8				
3 NM	1075 (1005)	120	635		1.8	1320 (1246)	3.7				
2 NM	755 (685)	100	530		2.0	1320 (1246)	4.6				
		80	425								

INSTRUMENT APPROACH CHART - ICAO

CHANGE: VM OCA, PROC MDA.

BEARINGS ARE MAGNETIC

05 Sep 2019

Stanley Airport Falkland Islands